

CAMPUS SETTING | OFFICE COMPLEX

6801-6831 Palisades Park Court, Fort Myers, Florida 33912

For Lease



SIZE: Total Building: 43,200 Sq. Ft.
Suites available include
1,800sf, 2,800sf, 3,600sf,
5,400sf, 7,200sf & 8,000sf

YEAR BUILT: November 2005

PRICE: \$9.50 Per Sq. Ft.
Plus \$5.38 Per Sq. Ft. CAM

COMMENTS:

- Professionally appointed office space in a campus setting at Daniels Pkwy. and Six Mile Cypress Pkwy.
- Easy access to I-75 (exit 131) & Southwest Florida International Airport.
- Parking ratio is 6 spaces per 1,000 sq. ft.

6801 Palisades Park Court, Fort Myers, Florida 33912							
Suite	Size	Price PSF	Base Rent	CAM	Monthly CAM	Taxes	Monthly Total
1	2,800	\$9.50	\$2,216.67	\$5.38	\$1,255.33	\$208.32	\$3,680.32
2	8,000	\$9.50	\$6,333.33	\$5.38	\$3,586.67	\$595.20	\$10515.20
6811 Palisades Park Court, Fort Myers, Florida 33912							
1	7,200	\$9.50	\$5,700.00	\$5.38	\$3,228.00	\$535.68	\$9,463.68
6821 Palisades Park Court, Fort Myers, Florida 33912							
1	7,200	\$9.50	\$5,700.00	\$5.38	\$3,228.00	\$535.68	\$9,463.68
5-6	3,600	\$9.50	\$2,850.00	\$5.38	\$1,614.00	\$267.84	\$4,731.84
6831 Palisades Park Court, Fort Myers, Florida 33912							
1	1,800	\$9.50	\$1,425.00	\$5.38	\$807.00	\$133.92	\$2,365.92
3	1,800	\$9.50	\$1,425.00	\$5.38	\$807.00	\$133.92	\$2,365.92
4-6	5,400	\$9.50	\$4,275.00	\$5.38	\$2,421.00	\$401.76	\$7,097.76

For more information please contact:

GARY TASMAN
Executive Director
(239) 489-3600
gtasman@cpswfl.com

SCOTT ROBERTSON
Director
(239) 489-3600
srobertson@cpswfl.com

**COMMERCIAL
PROPERTY**
SOUTHWEST FLORIDA, LLC

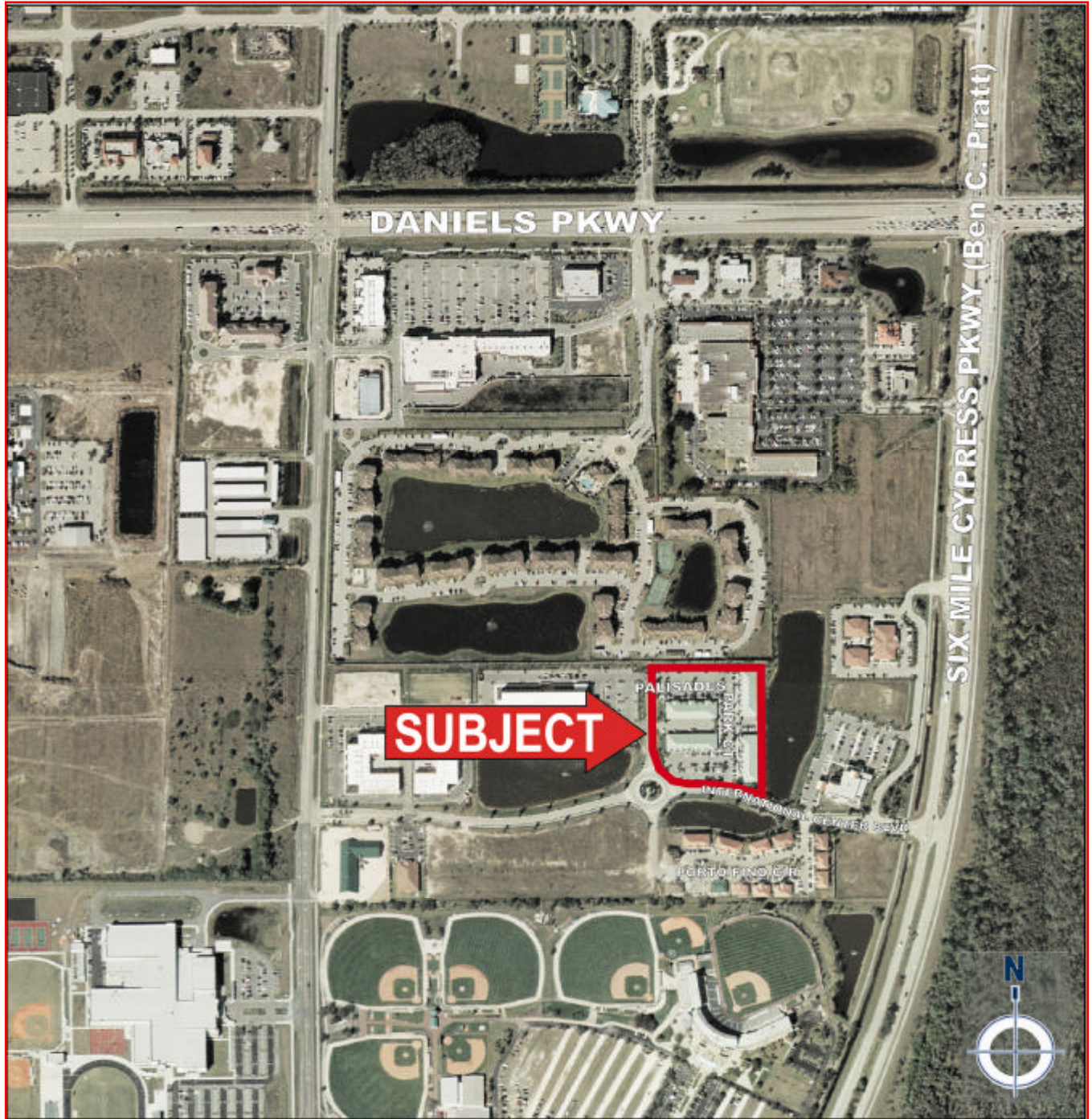
An independently owned and
operated member of the
**CUSHMAN &
WAKEFIELD**
ALLIANCE

13241 University Drive, Suite 101, Fort Myers, Florida 33907

CAMPUS SETTING | OFFICE COMPLEX

6801-6831 Palisades Park Court, Fort Myers, Florida 33912

For Lease



LOCATION AERIAL

No warranty or representation, express or implied, is made as to the accuracy of the information contained herein, and same is submitted subject to errors omissions, change of price, rental or other conditions, withdrawal without notice, and to any specific listing conditions, imposed by our principals.

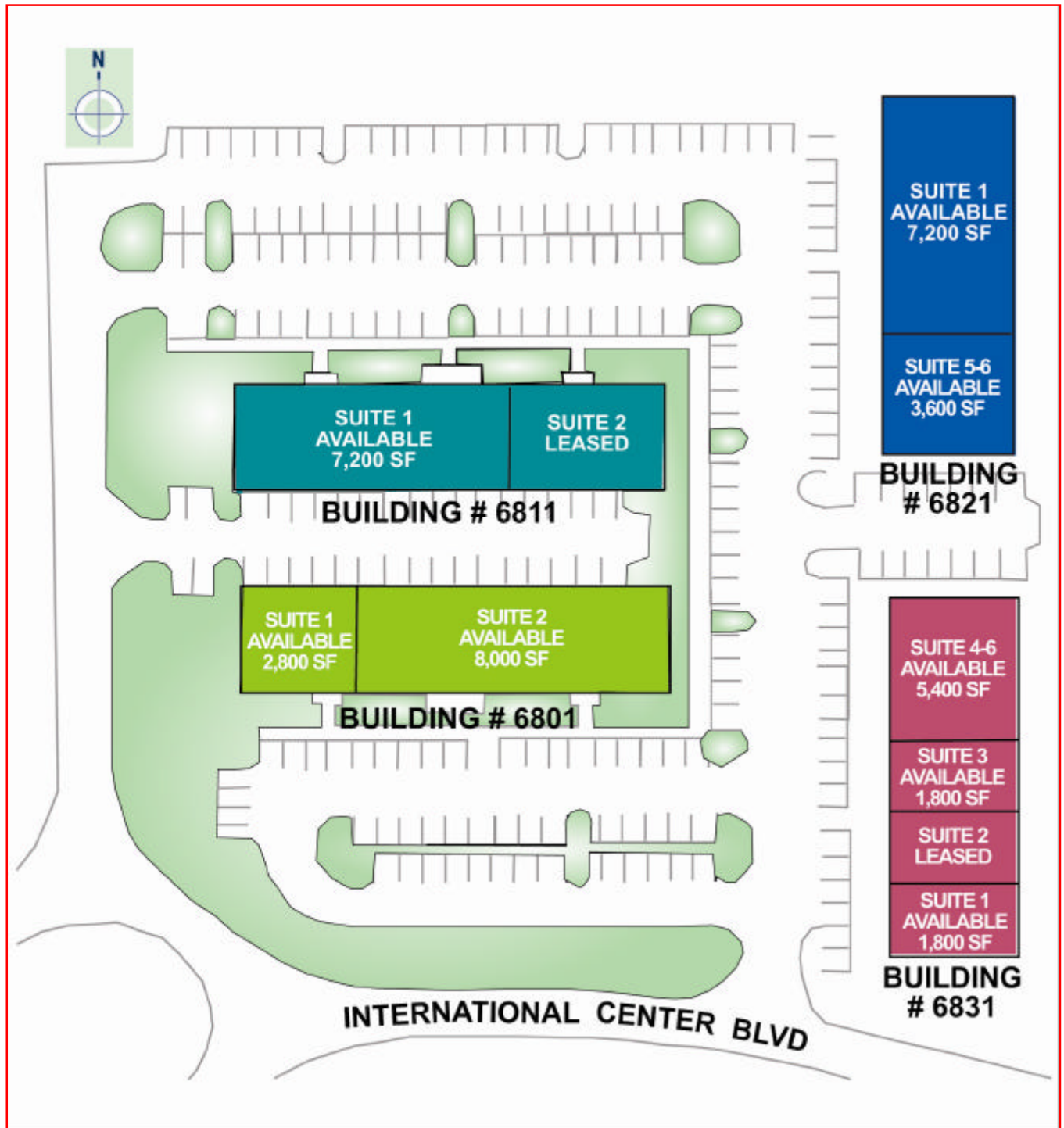
COMMERCIAL
PROPERTY
SOUTHWEST FLORIDA, LLC

An independently owned and
operated member of the
CUSHMAN & WAKEFIELD
ALLIANCE

13241 University Drive, Suite 101, Fort Myers, Florida 33907

CAMPUS SETTING | OFFICE COMPLEX

6801-6831 Palisades Park Court, Fort Myers, Florida 33912



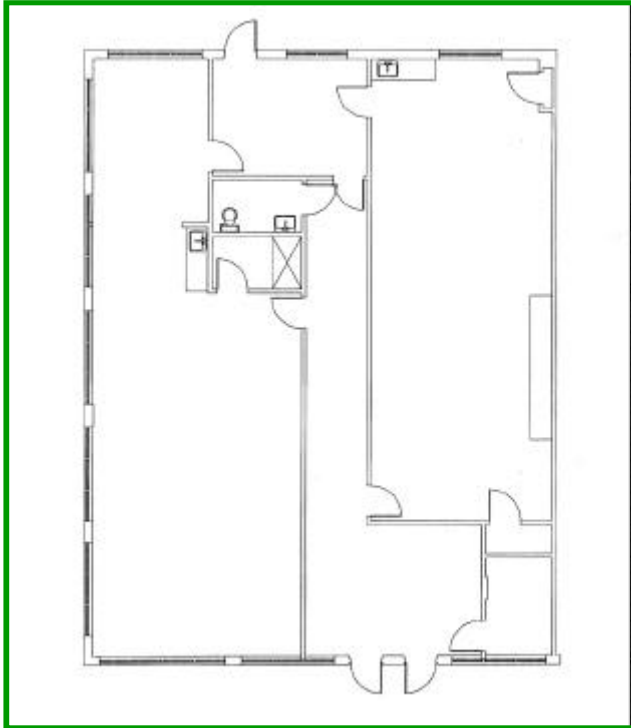
SITE PLAN

**COMMERCIAL
PROPERTY**
SOUTHWEST FLORIDA, LLC

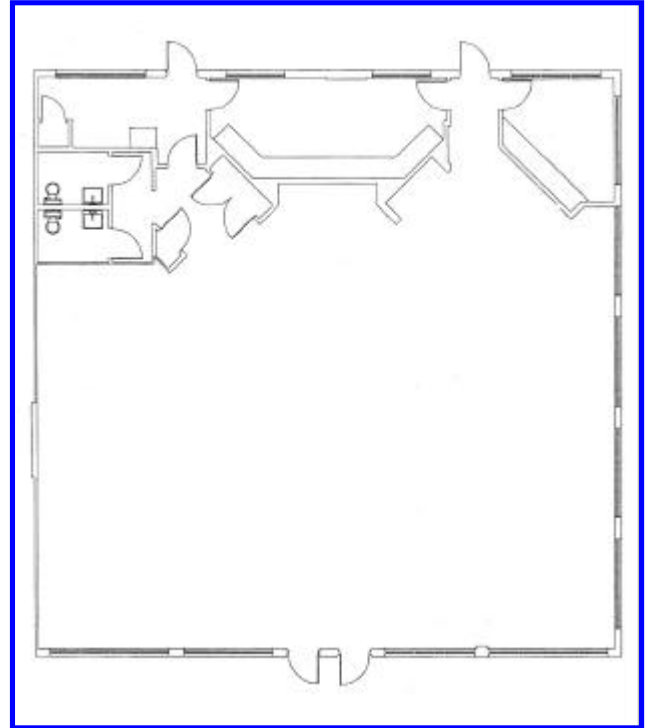
An independently owned and
operated member of the
**CUSHMAN &
WAKEFIELD**
ALLIANCE

CAMPUS SETTING | OFFICE COMPLEX

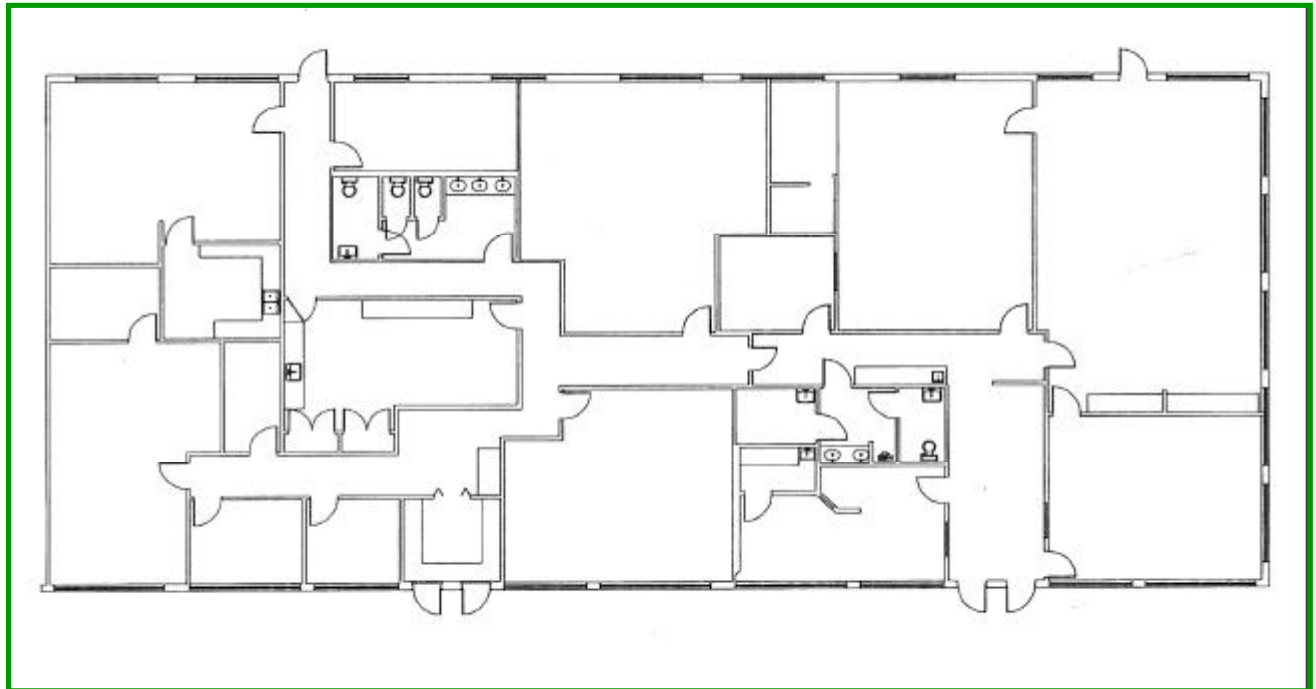
6801-6831 Palisades Park Court, Fort Myers, Florida 33912



6801 Palisades Park Ct, Suite 1



6821 Palisades Park Ct, Suite 5-6



6801 Palisades Park Ct, Suite 2

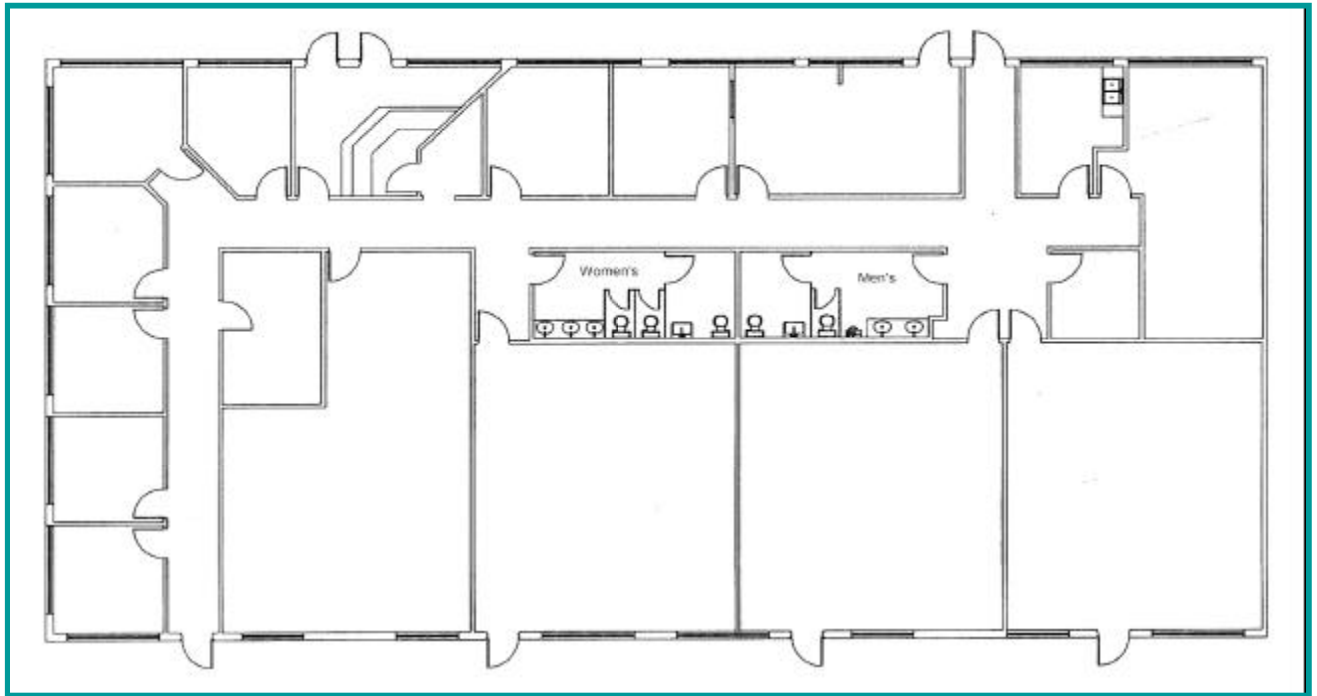
**COMMERCIAL
PROPERTY**
SOUTHWEST FLORIDA, LLC

An independently owned and
operated member of the
**CUSHMAN &
WAKEFIELD**
ALLIANCE

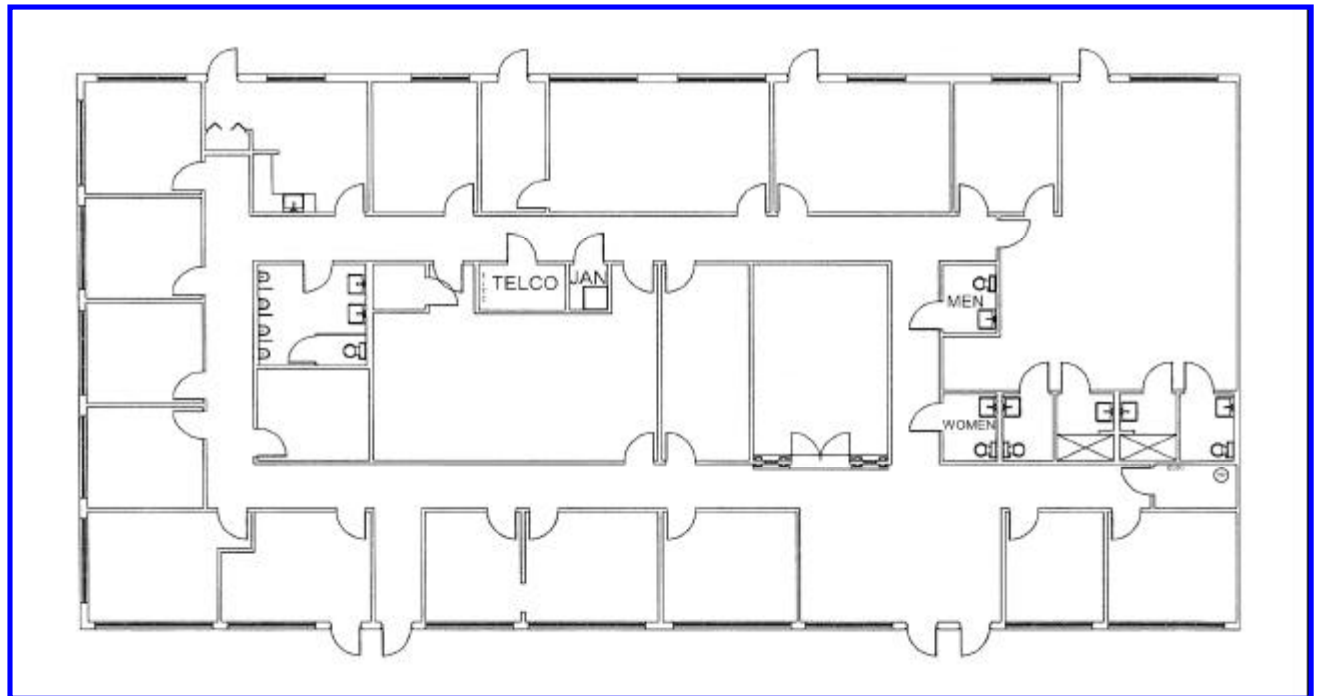
13241 University Drive, Suite 101, Fort Myers, Florida 33907

CAMPUS SETTING | OFFICE COMPLEX

6801-6831 Palisades Park Court, Fort Myers, Florida 33912



6811 Palisades Park Ct, Suite 1



6821 Palisades Park Ct, Suite 1

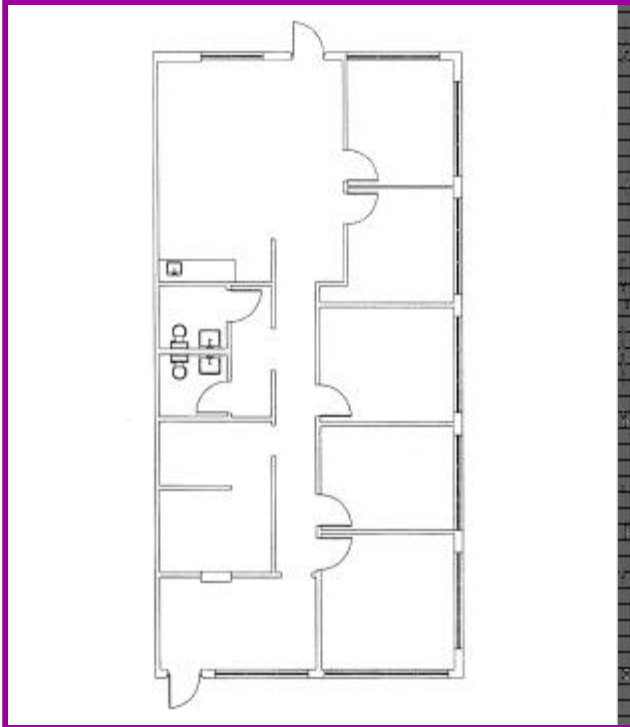
COMMERCIAL
PROPERTY
SOUTHWEST FLORIDA, LLC

An independently owned and
operated member of the
CUSHMAN & WAKEFIELD
ALLIANCE

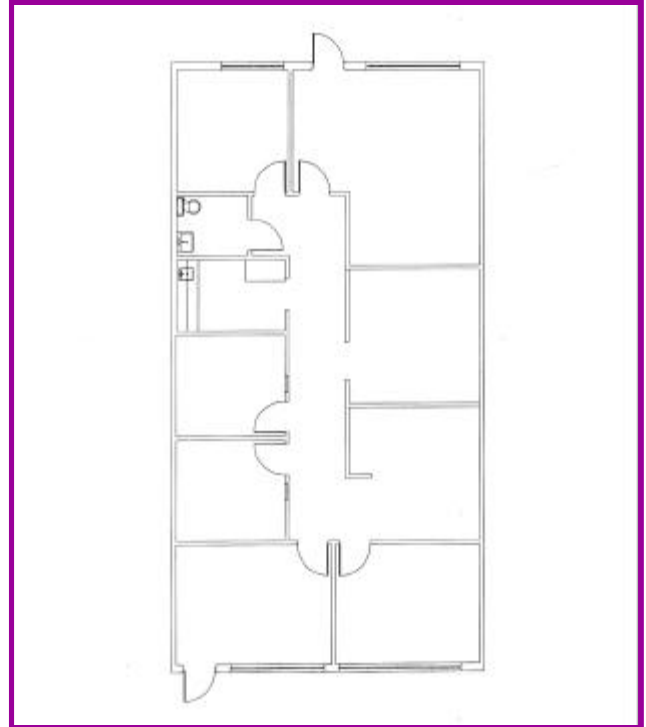
13241 University Drive, Suite 101, Fort Myers, Florida 33907

CAMPUS SETTING | OFFICE COMPLEX

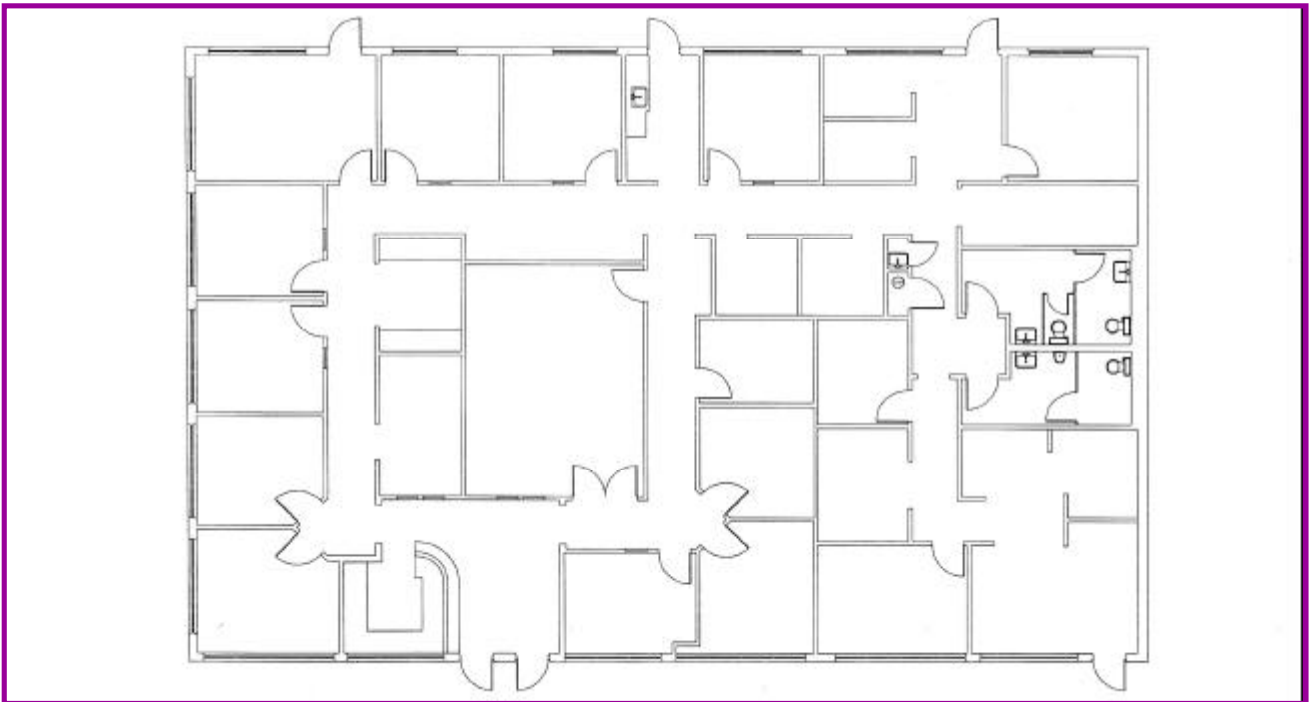
6801-6831 Palisades Park Court, Fort Myers, Florida 33912



6831 Palisades Park Ct, Suite 1



6831 Palisades Park Ct, Suite 3



6831 Palisades Park Ct, Suite 4-6

**COMMERCIAL
PROPERTY**
SOUTHWEST FLORIDA, LLC

An independently owned and
operated member of the
**CUSHMAN &
WAKEFIELD**
ALLIANCE